



Strategic Plan Initiative

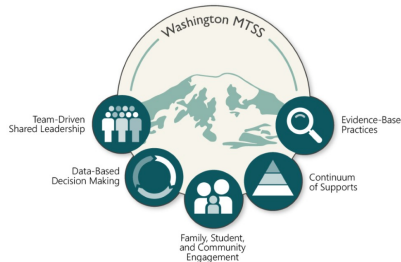
EFFECTIVE INSTRUCTION —B.1.b: Redesign and fully implement a comprehensive multi-disciplinary, system-wide Multi-Tiered System of Support.



SUMMARY — By increasing staff capacity to meet the needs of each learner, this initiative links to the Effective Instruction theme of the strategic plan, which supports the six priority student outcomes.

COMPLETED:

- ✓ Establish cross-department training and collaboration
- ✓ Establish District Advisory Team
- ✓ Collect base-line stakeholder data



RESOURCES:

- MTSS overview link
- Panorama survey information
- Strategic Plan link

“Multi-Tiered System of Supports (MTSS) helps to ensure students benefit from nurturing environments and equitable access to instruction and supports that are differentiated to meet their unique needs.” -OSPI

STUDENT IMPACT:

- Supports the whole child: academic, social-emotional, behavioral and attendance.
- Increases equitable and differentiated access to learning and intervention.
- Provides regular progress monitoring to ensure student growth.

STAFF IMPACT:

- Builds site-based teams to support student needs.
- Develops a continuum of supports and evidence based practices to support student growth.
- Provides networks with colleagues, families and communities to collaborate on student achievement.

QUESTIONS? PLEASE CONTACT:

Mimi Brown, 425-385-4061, MBrown@everettsd.org